

CART (0)

 Negative Supply
ADD TO CART

Since our founding in 2019 we've been committed to unveiling a complete ecosystem of revolutionary tools for the world of film scanning. Knowing many of our users are totally new to the concept of scanning film with a digital camera, we've composed this one-stop solution to cover the most demanded formats and sizes of film. Our Pro Kit is the most capable system we offer for 35mm, 120, 4x5, and 35mm mounted slide scanning.

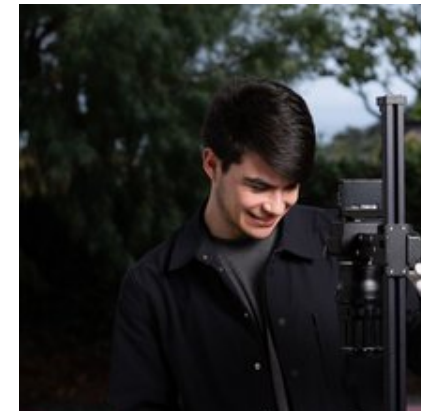
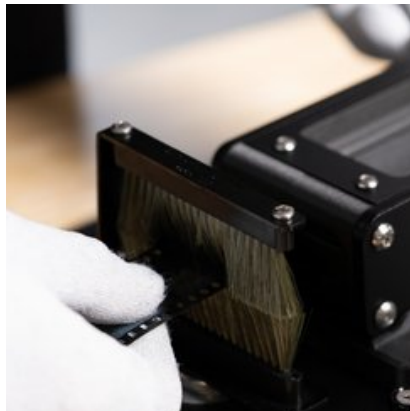
With the announcement of our Pro Film Carrier 35 and Pro Film Carrier 120 MK2 we're ready to introduce this major update to our Pro Kit. This kit now has our Pro Film Carrier 35 MK2 and Pro Film Carrier 120 MK2 which allow for expanded coverage of alternative formats, provide for flatter and smoother film advance, and offer professional build quality alongside uncompromising performance. We plan to offer film scanning cassettes and film roller modules for every roll film format produced since 1899.

The included Pro Riser MK3 copy stand is capable of supporting up to digital medium format systems, and has enough height to scan 4x5 film with a 105mm full frame equivalent lens and 35mm and 120 film with nearly any other camera and lens combination imaginable.

Note: *It is recommend that 4x5 film be scanned with full frame equivalent focal lengths of 90mm or longer.*



CART (0)

 Negative Supply

With support for 35mm, 120, 4x5, and 35mm mounted slide scanning right out of the box with optional accessories that can expand to nearly any other roll film format, the Pro Kit represents the best of everything that Negative Supply has to offer.

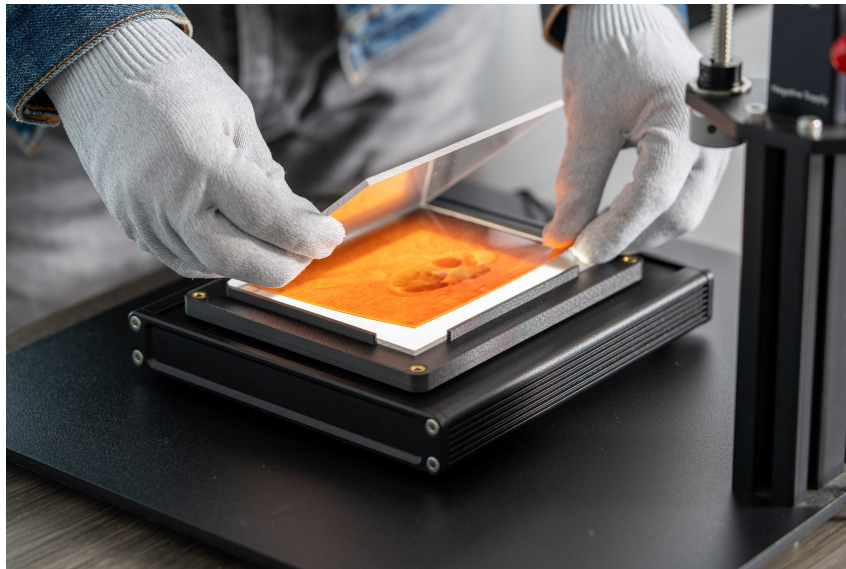
The Pro Film Carrier 35 MK2 supports half frame, standard 35mm, and panoramic formats and includes our 35mm Full Border Scanning Cassette. Our full border cassettes that allow you to scan beyond the sprocket holes



CART (0)

NS Negative Supply

MK2 supports all standard 120 formats with masks from 6x4.5cm up to 6x9cm and also includes our 120 Full Border Scanning Cassette with it's own complement of masks.



4x5 film scanning is easier than ever.

The Pro Riser MK3 allows for film scanning 4x5 film with up to 105mm full frame equivalent macro lenses

The Pro Kit for 35mm, 120 and 4x5 Film Scanning (2024 Version) includes:

CART (0)



negatives, panoramic negatives and half frame negatives. Smooth and consistent film advance is guaranteed with your CNC machined aluminum film advance knob. Scans full rolls or strips of 35mm film with ease.

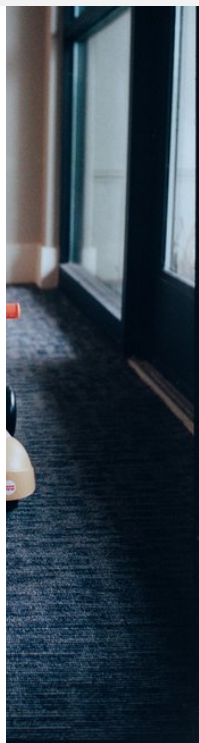
- **Pro Film Carrier 120 MK2:** Empowering you to scan a roll of 120 film in as fast as 60 seconds (or faster), the Pro Film Carrier 120 MK2 is one of our best offerings. Allowing full size scans of 6x4.5, 6x6 6x7, and 6x9 film all with included masks and ensuring sharpness with our double s-curve design. This tool guarantees sharp, consistent, and fast scanning results. Scans full rolls or strips of 120 film with ease.
- **4x5 Sheet Film Scanning Kit (Acrylic):** Our 4x5 Sheet Film Holder utilizes two sheets of micro-etched acrylic to scan your 4x5 film with showing 100% of the border and keeping it perfectly flat. This works on both the Pro Mount MK2 and directly on the 4x5 Light Source Pro. It's recommended that you use this tool directly on our 4x5 Light Source Pro, which requires no additional hardware or tools to work.
- **4x5 Light Source Pro (99 CRI):** Designed with 35mm, 120 and 4x5 film in mind, the 4x5 Light Source Pro is created for the most demanding users who require a bright, evenly-illuminated, and durable light source with a high degree of color accuracy.
- **Pro Riser MK3:** The Pro Riser MK3 is our most solid copy stand to scan all conventional film formats (up to 8x10 film). It can support the heaviest of setups and is our most advanced copy stand to date, featuring a solid metal construction and a host of compelling features.
- **Pro Mount MK2 with the anti-static brush and 35/120 adapter plates and leg extension kit:** An indispensable tool and the core of this kit when matched with the Pro Film Carrier 35 MK2 and Pro Film Carrier 120 MK2. This

CART (0)



- **Pro Film Carrier MK2 Hood Combo:** The Scanning Hoods for our film carriers reduce stray light than can cause ghosting and other artifacts when scanning film in well lit rooms or with overhead lights on. These are popular and immensely helpful.
- **Basic Mounted Slide Scanning Kit:** This piece of kit fits directly on your Pro Mount MK2 (or straight onto the 4x5 Light Source Pro) and allows you to easily scan mounted 35mm slides efficiently by inserting one slide after the other.
- **120 Full Border Scanning Cassette:** Get those coveted borders on 120 film out to the film rebate by using this accessory. Scans 100% of the film and rebate area, critical for archival purposes or aesthetic reasons.
- **35mm Full Border Scanning Cassette:** With this cassette you can scan beyond the sprocket holes and get the full film rebate for archival or aesthetic purposes.

CART (0)

NS Negative Supply**INQUIRE WITH US ABOUT YOUR SPECIFIC NEEDS**

With optional Film Scanning Cassette add-ons for various formats along with format-specific Film Advance Module add-ons, this new Pro Kit can support all of the following formats:

- Super 8/8mm - already available
- Minox/suminiature - already available

CART (0)

NS

 Negative Supply

- APS - already available
- 126 - already available
- 828 - expected in mid 2024
- 35mm with standard borders (already included in Pro Kit with half frame, standard size, and panoramic format masks)
- 35mm with full borders (already included in Pro Kit with half frame, standard size, and panoramic format masks)
- 127 - expected in mid 2024
- 616/116 - expected in mid 2024
- 120 with standard borders (already included in Pro Kit with 6x4.5, 6x6, 6x7, and 6x9cm format masks)
- 120 with full borders (already included in Pro Kit with 6x4.5, 6x6, 6x7, and 6x9cm format masks)
- 620/117 - expected in mid 2024
- IMAX/65mm - expected in mid 2024
- 35mm mounted slides (already included in Pro Kit - this is a film holder and not a cassette and therefore does not require a film advance module)
- 120 mounted slides (this is a film holder and not a cassette and therefore does not require a film advance module)
- 4x5 inch sheet film (already included in Pro Kit)